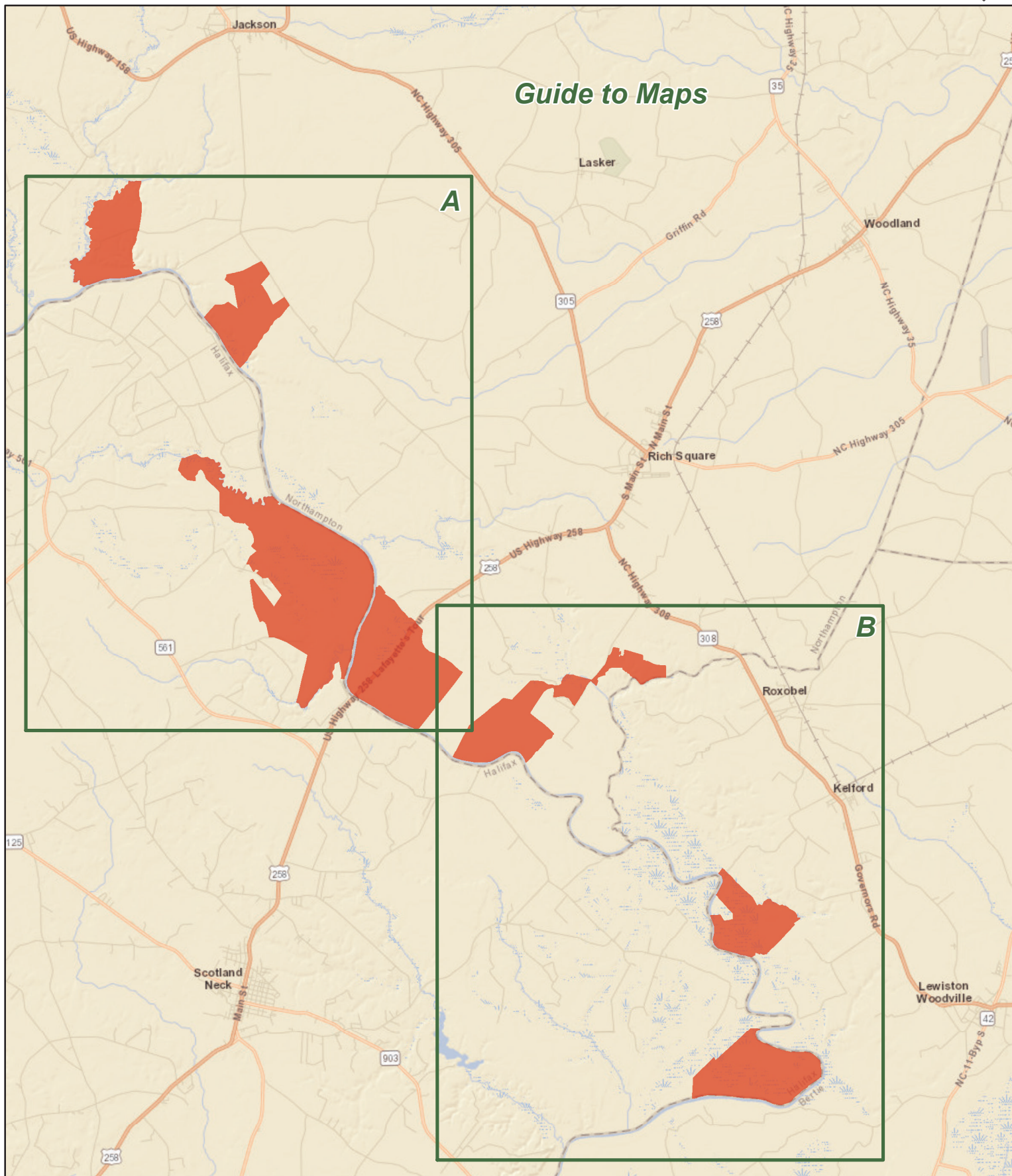


UPPER ROANOKE RIVER WETLANDS GAME LAND

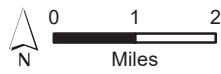
N.C. Wildlife Resources Commission
 Bertie, Halifax and Northampton Counties (11,070 total acres)



Guide to Maps



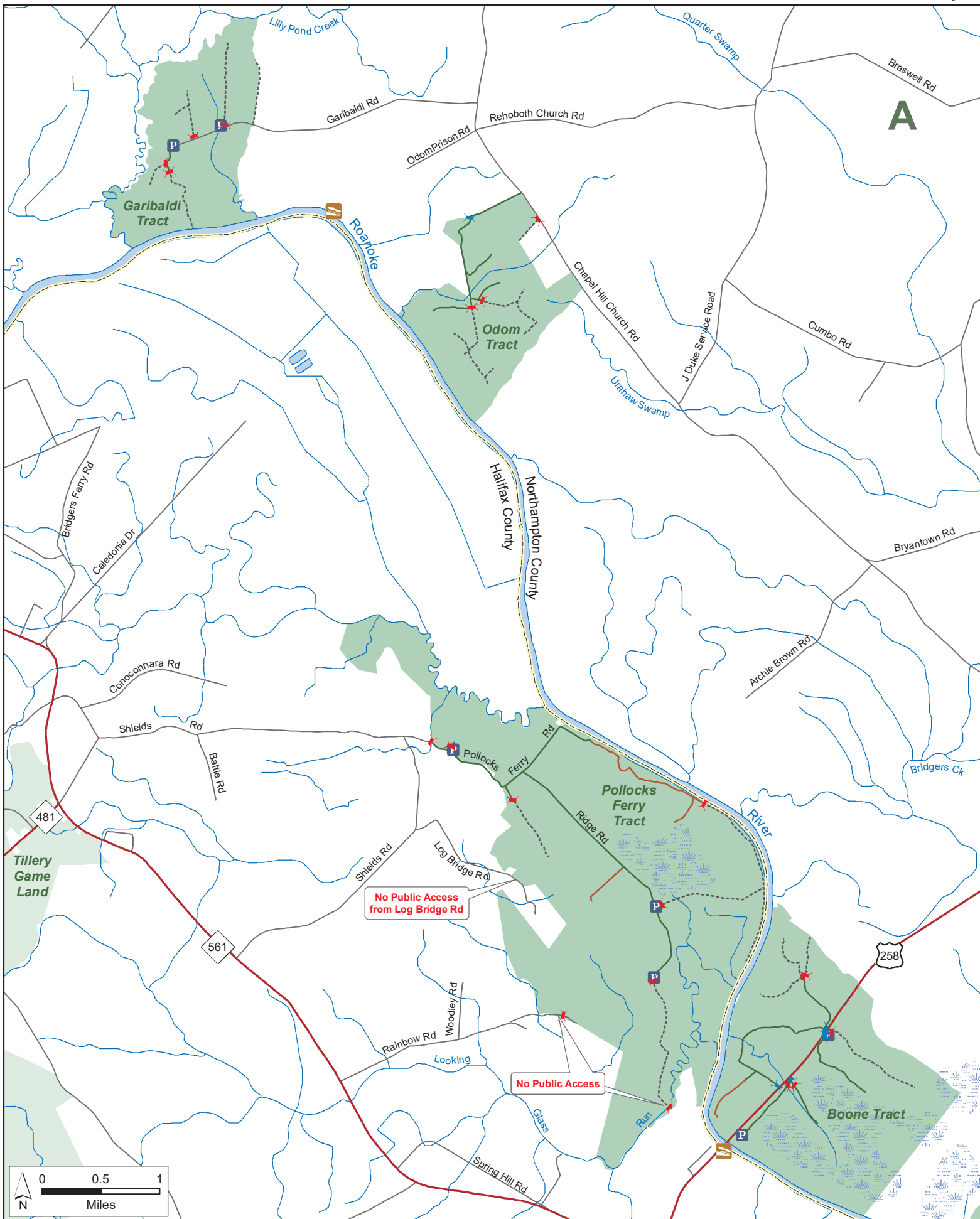
- | | |
|-------------------------|--------------------------------|
| Game Land | Disabled Sportsman Access Road |
| Permanently Closed Gate | Hunter Vehicle Access Road |
| Seasonally Closed Gate | Secondary Road |
| Public Parking | Trail |



Note: Camping is authorized within 100 yards of Roanoke River on state-owned portions of the Roanoke River wetlands. No road access to several tracts. The Pollocks Ferry Tract includes a private in-holding and a boat ramp which is not available for public use. Weapons may not be discharged within 150 yards of the Tract's residence.

UPPER ROANOKE RIVER WETLANDS GAME LAND (continued)

N.C. Wildlife Resources Commission
Bertie, Halifax and Northampton Counties



UPPER ROANOKE RIVER WETLANDS GAME LAND (continued)

N.C. Wildlife Resources Commission
Bertie, Halifax and Northampton Counties

