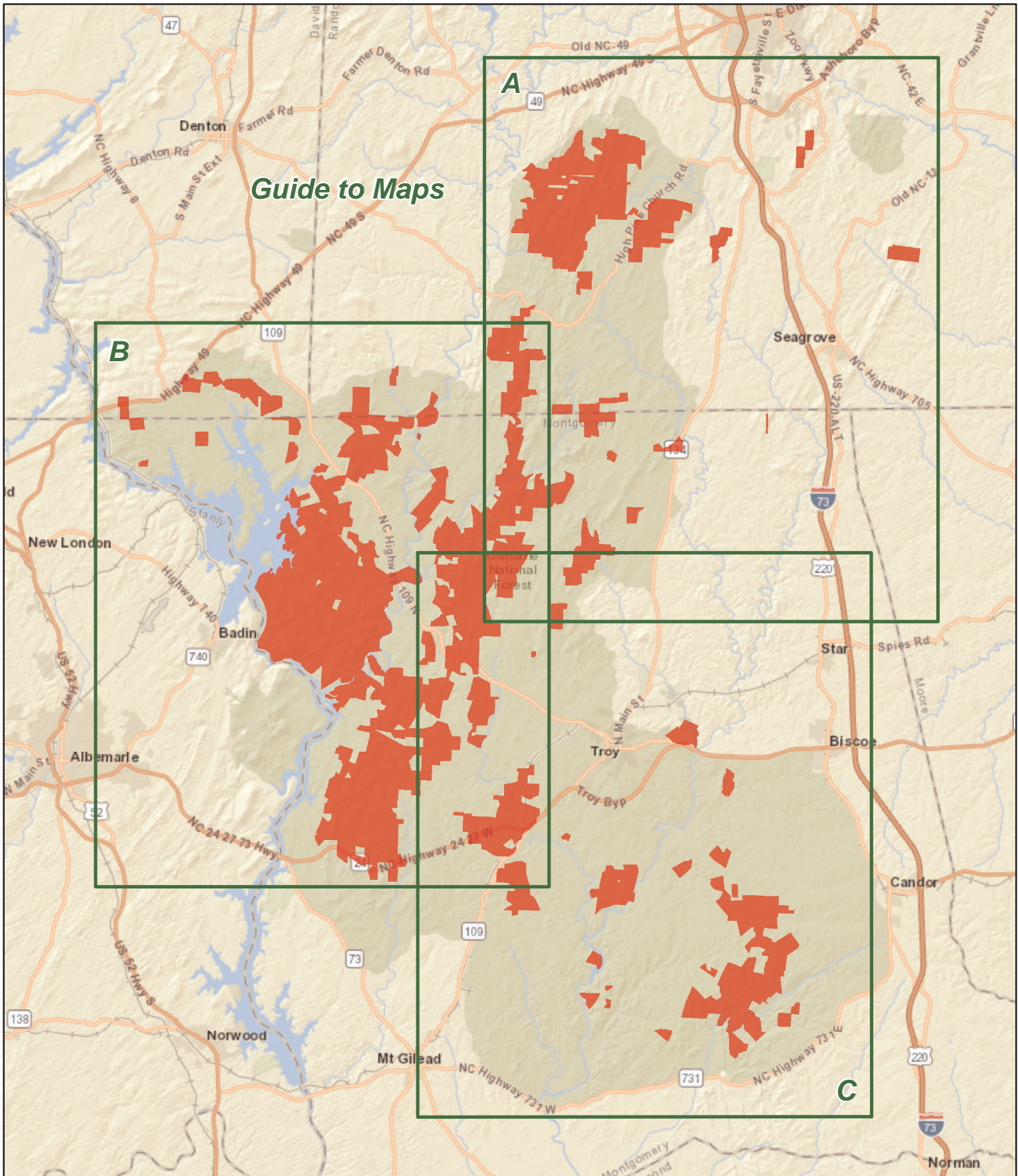


UWHARRIE NATIONAL FOREST GAME LAND
 U.S.D.A. Forest Service, N.C. Wildlife Resources Commission
 Davidson, Montgomery and Randolph Counties (52,710 total acres)



Guide to Maps



- | | | |
|-------------------------|---------------------|-----------------------|
| Public Parking | Public Fishing Area | Game Land Type |
| Public Shooting Range | Secondary Road | Archery Zone |
| Non-WRC Boating Access | Trail | Game Land |
| WRC Boating Access Area | State Park | Waterfowl Impoundment |

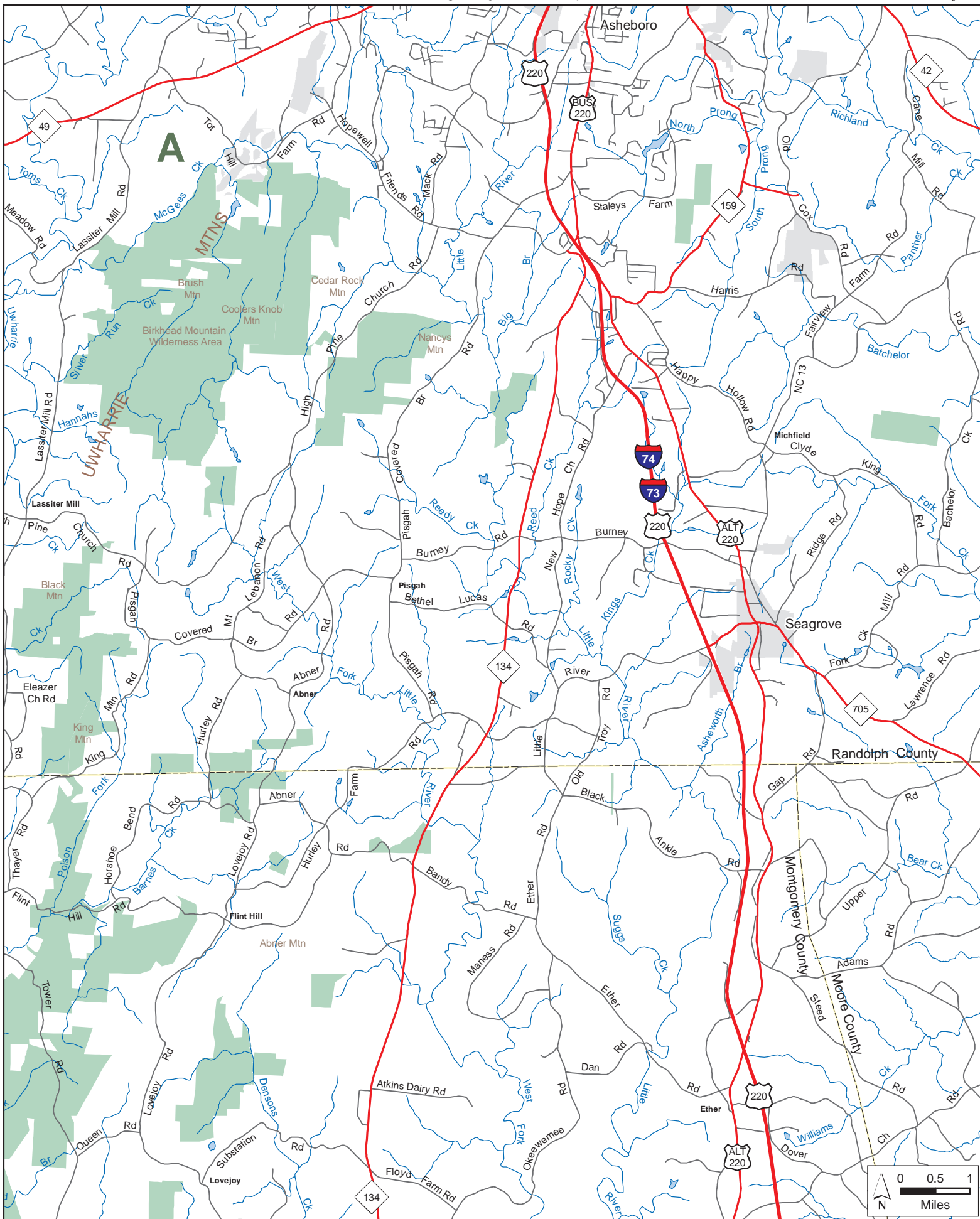
Note: Unlawful to hunt or discharge any weapon within 150 yards of designated camping area.



UWHARRIE NATIONAL FOREST GAME LAND (continued)

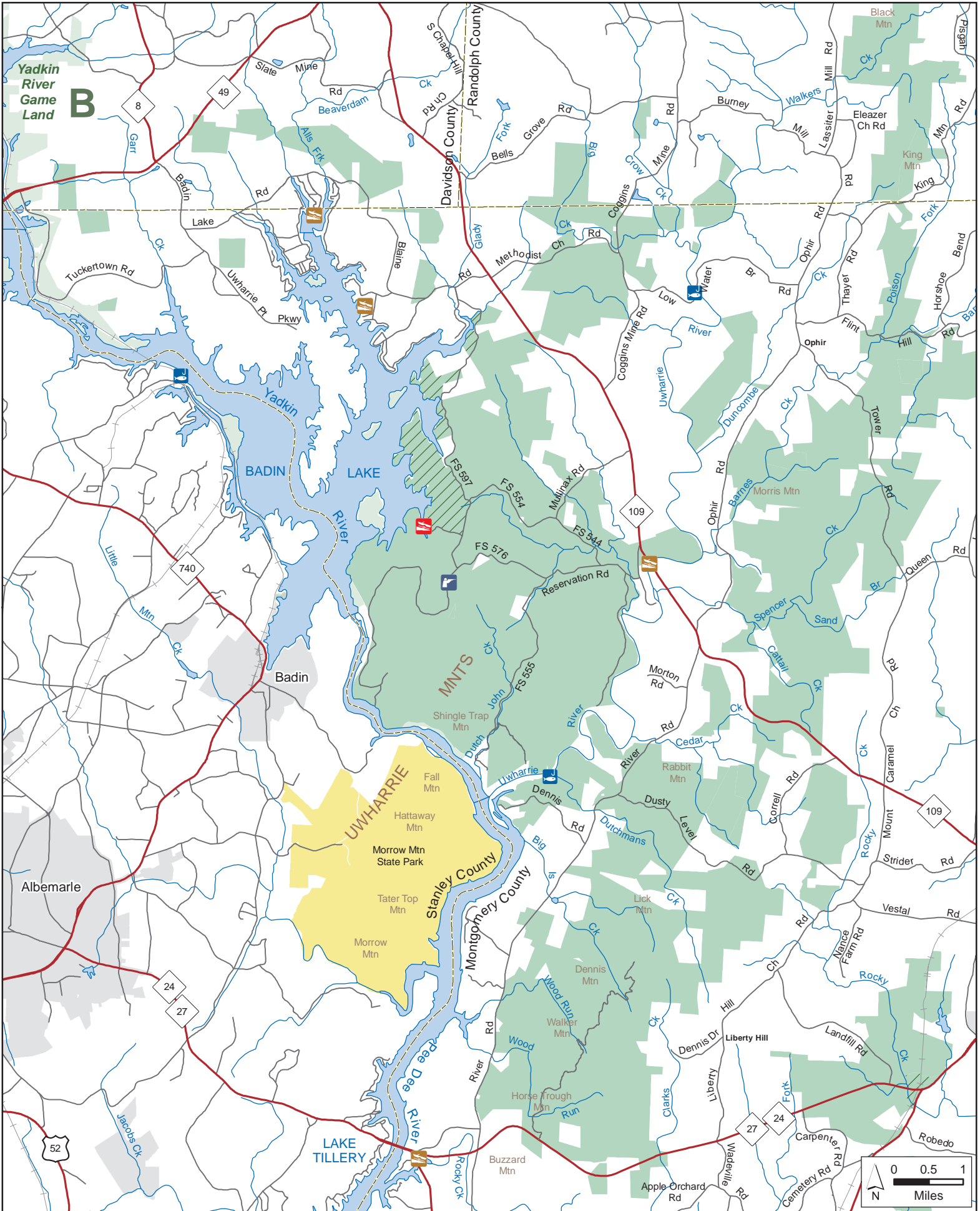
U.S.D.A. Forest Service, N.C. Wildlife Resources Commission

Davidson, Montgomery and Randolph Counties



UWHARRIE NATIONAL FOREST GAME LAND (continued)

U.S.D.A. Forest Service, N.C. Wildlife Resources Commission
Davidson, Montgomery and Randolph Counties



UWHARRIE NATIONAL FOREST GAME LAND (continued)

U.S.D.A. Forest Service, N.C. Wildlife Resources Commission
Davidson, Montgomery and Randolph Counties

