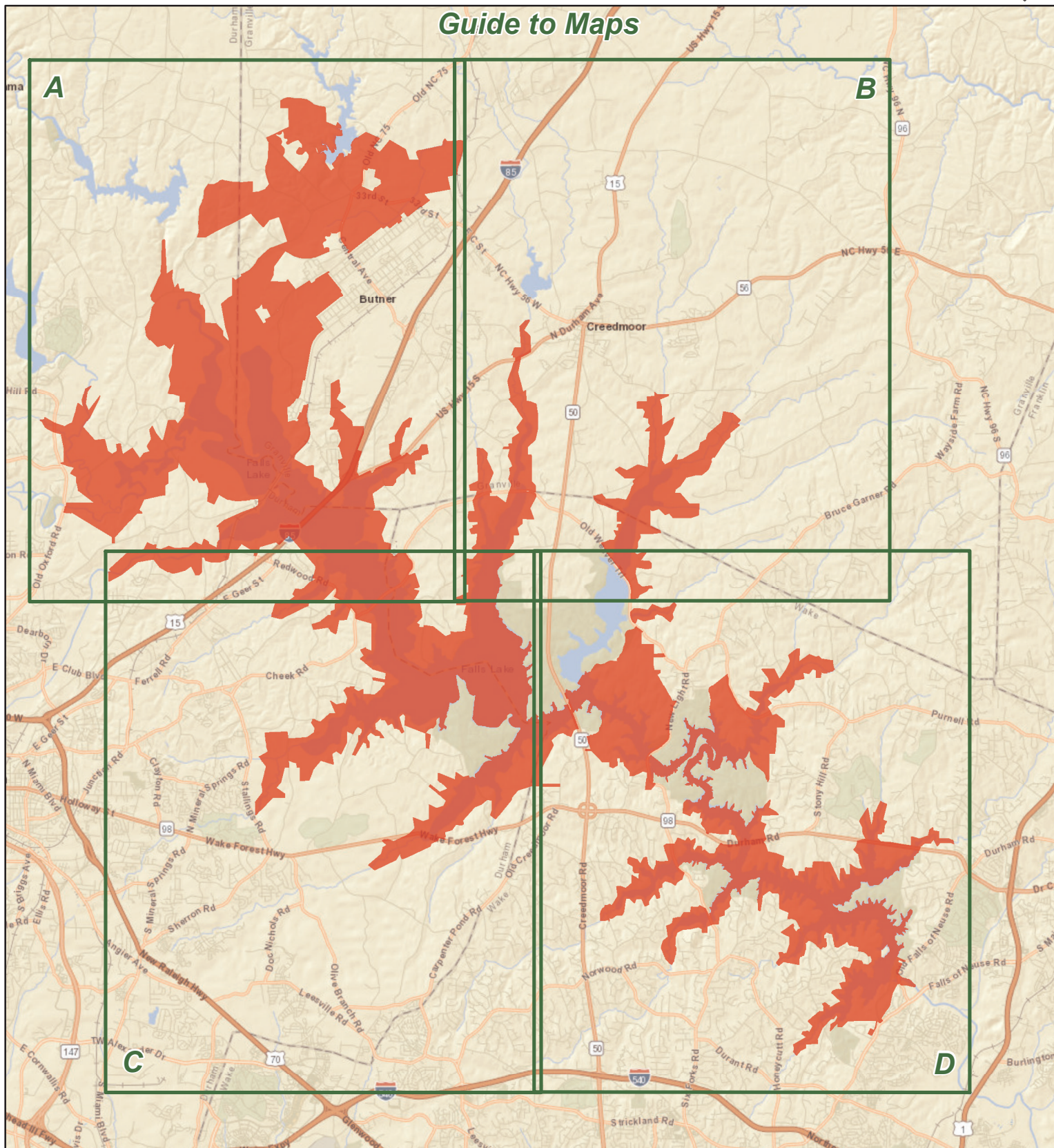


BUTNER-FALLS OF NEUSE GAME LAND

U.S. Army Corps of Engineers, N.C. Department of Agriculture, N.C. Department of Health and Human Services, N.C. Wildlife Resources Commission, Town of Butner. Durham, Granville and Wake Counties (37,480 total acres)



Guide to Maps



Game Land Type

- Archery Zone
- Game Land
- Restricted Firearms Zone
- Safety Zone
- Waterfowl Impoundment
- Federal Land

- Designated Camping Area
- Disabled Sportsman Blind
- Permanently Closed Gate
- Seasonally Closed Gate
- Public Parking
- Non-WRC Boating Access
- WRC Boating Access Area

- Public Fishing Area
- Hunter Vehicle Access Road
- Secondary Road
- Trail

Note: 2025-2026 Flooding Schedule for Waterfowl Impoundments will not include Brickhouse Road Lower, Hwy 98 and Little River.

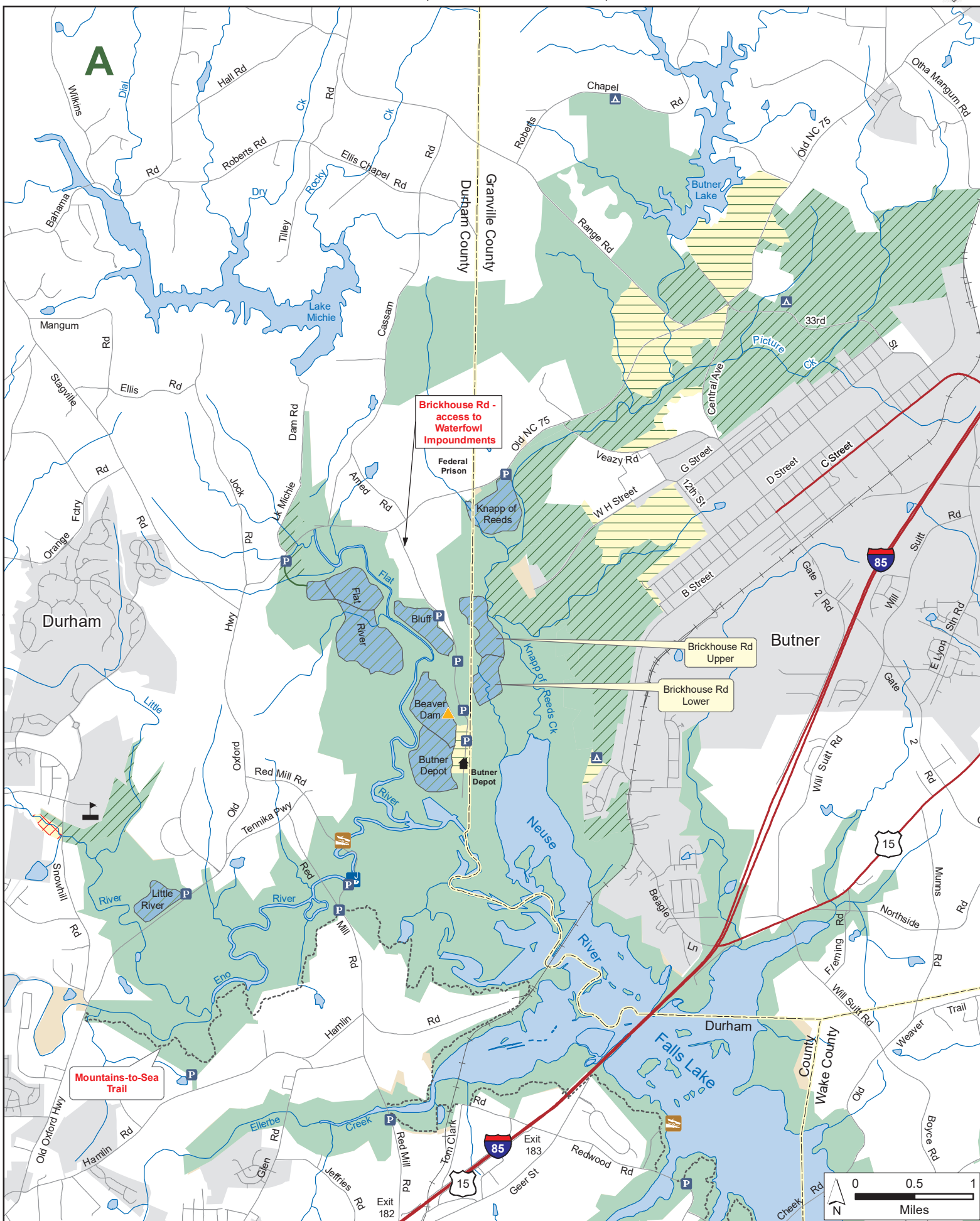
Disabled sportsman waterfowl blind is available on Beaver Dam Impoundment. Unless otherwise noted, the surface area of Falls Lake is game land.

Safety Alert: Hikers may be encountered along the Mountains-to-Sea Trail.



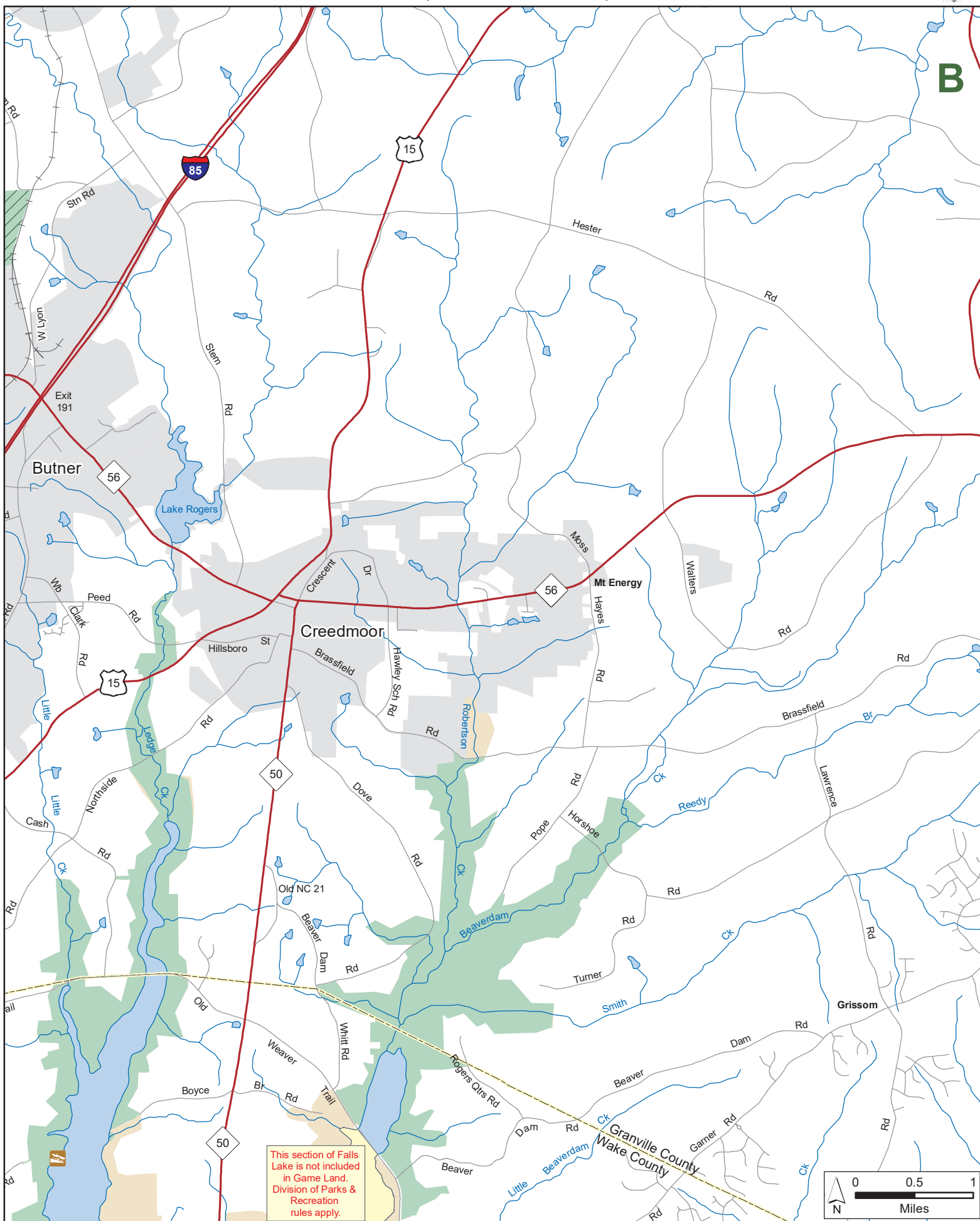
BUTNER-FALLS OF NEUSE GAME LAND (continued)

U.S. Army Corps of Engineers, N.C. Department of Agriculture, N.C. Department of Health and Human Services,
N.C. Wildlife Resources Commission, Town of Butner. Durham, Granville and Wake Counties



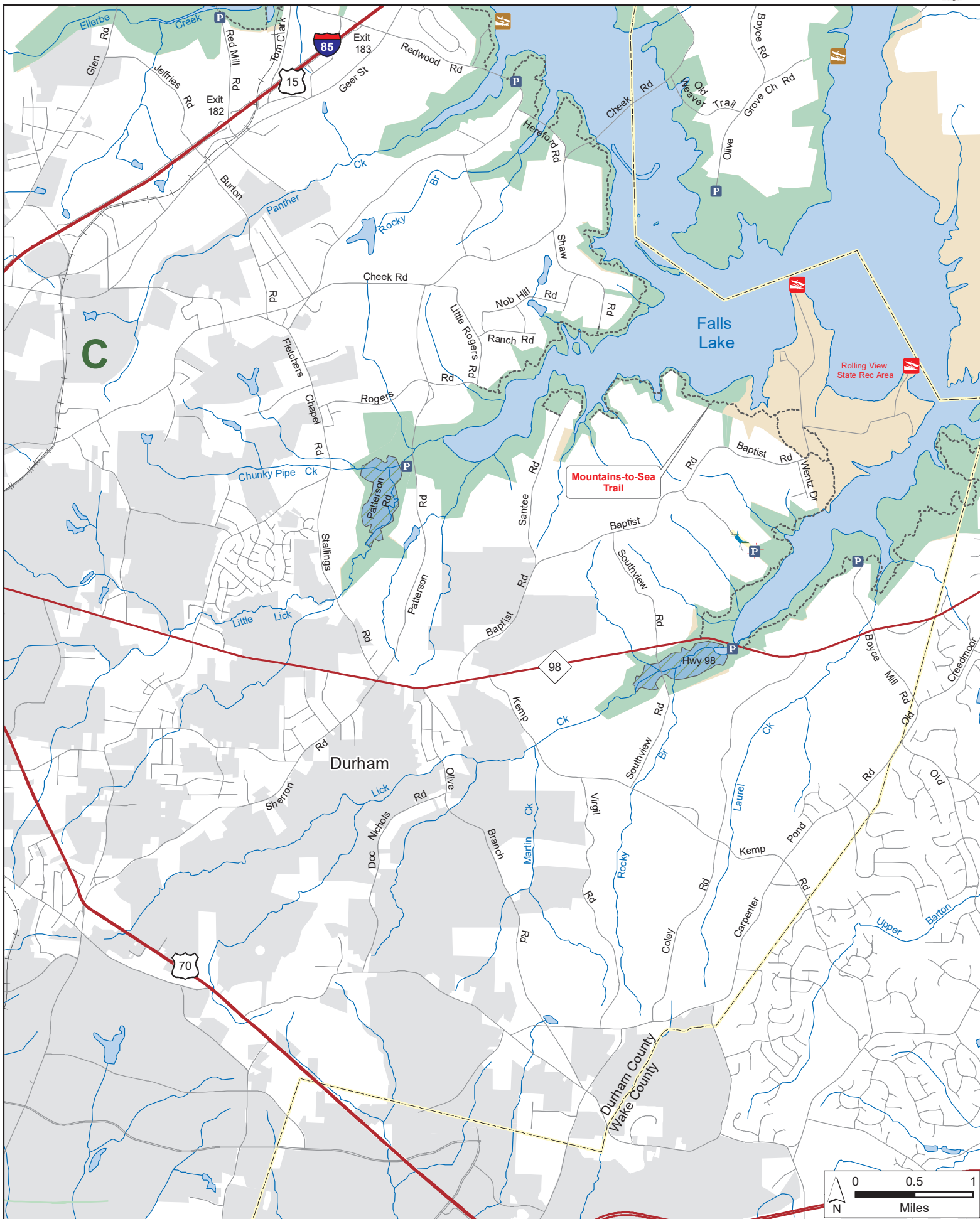
BUTNER-FALLS OF NEUSE GAME LAND (continued)

U.S. Army Corps of Engineers, N.C. Department of Agriculture, N.C. Department of Health and Human Services,
N.C. Wildlife Resources Commission, Town of Butner. Durham, Granville and Wake Counties



BUTNER-FALLS OF NEUSE GAME LAND (continued)

U.S. Army Corps of Engineers, N.C. Department of Agriculture, N.C. Department of Health and Human Services,
N.C. Wildlife Resources Commission, Town of Butner. Durham, Granville and Wake Counties



BUTNER-FALLS OF NEUSE GAME LAND (continued)

U.S. Army Corps of Engineers, N.C. Department of Agriculture, N.C. Department of Health and Human Services,
N.C. Wildlife Resources Commission, Town of Butner. Durham, Granville and Wake Counties



This section of Falls Lake is not included in Game Land. Division of Parks & Recreation rules apply.

Hwy 50 State Rec Area

Mountains-to-Sea Trail

Falls Lake Dam Res Area

